

# PROJECT MANAGEMENT

# Project Management

International

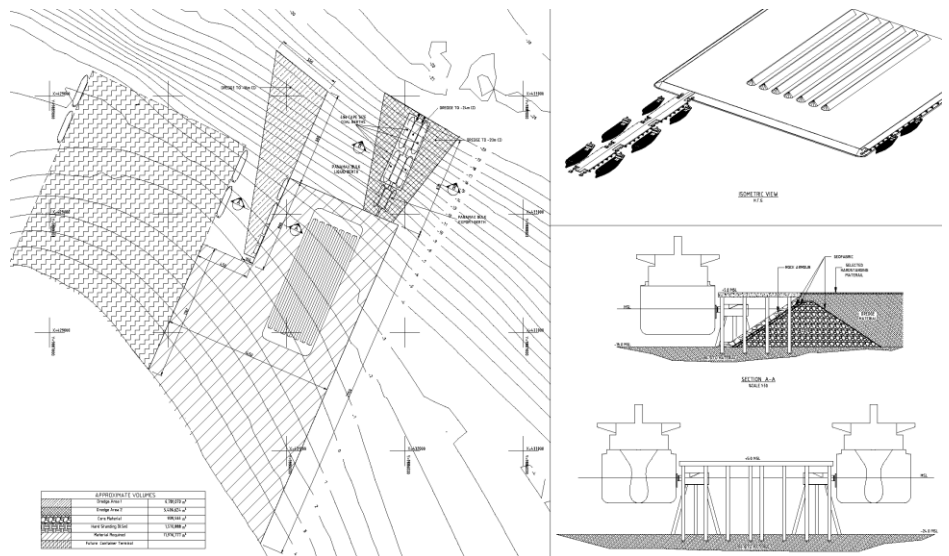
## Conceptual Study for a coal export facility in Sumatra

Client: TJ Shipping and Logistics  
Location: Sumatra  
Period: August to November 2007

### Conceptual Study for a coal export facility in Sumatra

The Employer, TJ Shipping and Logistics, have requested Project Management International Limited (PMI) to come up with a conceptual study for the development of a coal and export facility in Sumatra.

The intent of this study is to identify a number of possible feasible coal export facilities sites in Sumatra, and subsequently work out a conceptual layout on the preferred location.



Layout of Export Terminal

PMI executed a desktop study, with the following baseline parameters:

- Port to have an initial capacity to export 20 to 30 million tonnes/annum
- Port to have an ultimate capacity of 50 million tonnes/annum, three to five years after start-up
- Palm Oil Bulk Liquid Terminal to be included for product carriers
- Shipyard with slipway to construct barges of approximate 5000 dwt in size to be included in planning

### The Works

The following main criteria were considered for the identification of possible sites:

- Location of Coal Mining Concession area
- Geological features of the site and transport linkages

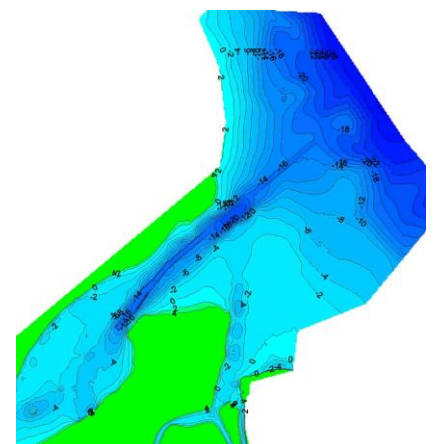
- Topographic and Bathymetric features
- Wave climate
- Existing Infrastructure

Based on the results of the desktop study and subsequent site visit, the final location of the export terminal was identified.

TJ Shipping subsequently requested PMI to perform a high level conceptual engineering, to derive the following information:

- Initial layout for the port infrastructure
- Requirements for material handling equipment and transport network
- Feasibility costing for the facility

The whole project was completed within the time frames set out. The project is expected to start its implementation in 2009.



View Dredging requirements